

MOVING YOU FURTHER

15·18
20BT-9U



Some of the photos may include optional equipment.

Your satisfaction is our priority!

Compact forklift with proven AC technology

Hyundai introduces the new BT-9U series 3 wheel battery forklift. The BT-9U series features upgrades to the previous series, including new technology that offers higher efficiency, durability and operator convenience.

Efficiency

- Application of Electric Power Steering System to improve energy efficiency
- Powerful and Sophisticated driving performance due to Dual drive motor
- Light and Precise Fingertip control (OPT)
- Comfortable and efficient Direction & Horn switch (OPT)

Durability

- Application of ZF Drive System (Drive Axle + Drive motor + Electric Parking Brake) to improve reliability and durability of drive system
- Advanced reliability of information processing due to Dual micom - ZAPI controller
- Semipermanent Oil Cooled Disc Brake
- IP43 Motor & IP65 Controller

Safety

- Curve Control feature reduces driving speed when turning through a curve
- Anti-Roll Back feature prevents roll back on an incline
- Electric Auto Parking Brake
- Operator Presence Sensing System

Easy service

- Side Battery Extraction for easy change out
- Self Diagnostics function
- Continental SC18 Solid Tires for longer wear
- Brake oil reservoir with level sensor for easy inspection



Power & Performance

High Efficiency & Optimal Performance

An efficient, smooth running and compact design provides enhanced performance and outstanding productivity.



Some of the photos may include optional equipment.

Applied ZF Drive Package (Drive Axle + Drive Motor + Electric Parking Brake) to Dual Drive system UPGRADE

ZF is a top global power train manufacturer, well known for reliability and durability. The ZF dual drive system ensures excellent drawbar pull and short turning radius, and brushless AC motors are virtually maintenance free. An automatic electric parking brake is also applied, which is safe and requires no physical operation.



Energy consumption Improvement

The energy consumption has been significantly reduced due to newly applied EPS system and ZF drive package. This adoption is expected to decrease the costs and increase the operating time.

Previous Model (20BT-9 : 585Ah) : 251 minutes (100%)

Upgraded Model (20BT-9U : 585Ah) : 304 minutes (121%)

※The figures above are based on Hyundai's test results for a single charge cycle and may differ from actual working conditions.

UPGRADE



EPS (Electric Power Steering) System

EPS system consisting of steering sensor, controller, and steering motor operates only when steering wheel is turned. So unnecessary energy consumption and noise were eliminated. Also, speed-sensitive steering wheel allows the driver to set the steering as desired.

UPGRADE



New ZAPI Controller

The new ZAPI AC controller with dual micom and made by ZAPI monitors the dual signals and detects faults. So it is possible to control the forklift quickly and securely. Also, capacity of drive controller has been increased for driving performance.

UPGRADE



Auto fork leveling system (OPT)

In order to improve productivity the auto fork leveling system by automatically stopping when the forks are level.



Continental SC18 Solid Tire

Continental SC18 solid tires are equipped as a standard. It ensures low energy consumption and long service life.



Vehicle Performance optimized for working condition

This function optimizes the performance of vehicle for the purpose of work, such as speed of operation, maximum working time and operator's proficiency.

H mode : High performance mode with fast driving speed and fast lifting speed

N mode : Normal mode with balanced performance and energy consumption

E mode : Economy mode maximizing battery life



Easy & Comfort

Optimized Ergonomics & Fast and Easy Maintenance

An ideal arrangement of components ensures easy access and convenience for maintenance.



Spacious operating space

The newly designed operating space was made for more space, a wider field of view and operator comfort.



Comfortable suspension seat

An attractive and adjustable seat, based on a human engineering design, provides great comfort. Also, the angle of the armrest can be adjusted to reduce the fatigue of the driver.

- Grammer Seat
- Adjustable suspension stiffness based on the driver's weight (45~170kg)
- ELR type seat belt standard
- Heater and Backrest extension (OPT)

Some of the photos may include optional equipment.



Directional & horn switch on lever (OPT)

Electronic directional control and secondary horn are mounted to the hydraulic lift lever for quick and precise maneuvering.



Finger tip control levers (OPT)

Ergonomically designed fingertip control levers for improved operator comfort and productivity. The armrest can be adjusted for operator comfort.



Turtle Mode

When selecting the turtle mode while working in narrow and congested workplace, the travel speed is reduced at a preset speed.

4.3 inch LCD color monitor

The LCD color monitor with 4.3 inch graphic smart display allows the operator to identify speed, travel direction, and operating hours and control the machine efficiently. The load indicator displays the load weight in the monitor. The operator can select various performance modes to meet all working conditions. Multilanguage (maximum 12) is available.



Advanced LCD Monitor

- | | |
|--|------------------------------|
| ① Speed (Digital) | ⑦ Turtle/Scroll down |
| ② Steering wheel position and travel direction | ⑧ ESC/Back |
| ③ Battery discharge indicator | ⑨ Enter |
| ④ Scroll up | ⑩ Low brake oil warning lamp |
| ⑤ Menu/Scroll Left | ⑪ Error warning lamp |
| ⑥ Performance/Scroll right | ⑫ High temp warning lamp |

UPGRADE



Easy battery replacement

Guide bar installed on the wall helps the battery to be moved to the right position smoothly when removing and mounting.



Brake oil reservoir with level sensor

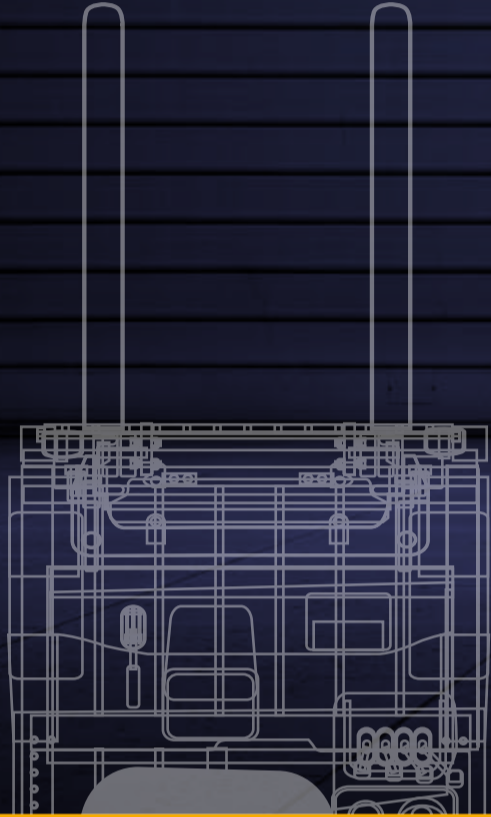
The enhanced brake oil reservoir, located in the upper left dash is equipped with an electronic level sensor and easily visible through the monitor.



Secure & Safety

Advanced Safety

The safely designed driver's space makes your operating more comfortable.



EXCELLENT VISIBILITY

ADVANCED SAFETY



Some of the photos may include optional equipment.

Excellent visibility for safe operation

Optimized lift cylinder arrangement provides the operator with wider visibility. The panoramic mirror expands the driver's view when backing up.



Some of the photos may include optional equipment.



Strong overhead guard

Exceeding ISO6055 regulations, the overhead guard offers great protection combined with excellent all around visibility.



Safety lamps

LED combination lights and halogen headlights offer the driver visibility in all circumstances.

AUTO PARKING



Auto parking brake

No operation is required by the operator after turning off a vehicle. (There are no levers, no switches.)

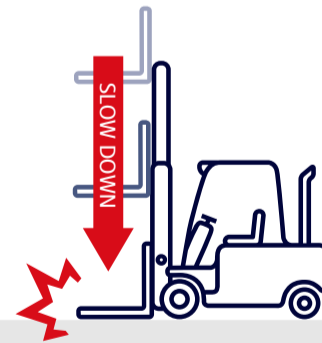
Safety features

The adoption of a high-sensitivity sensor and advanced safety system can prevent the safety accidents.



Anti roll back system

Anti Roll-back system offers protection against the machine rolling back on a ramp in combination with exceptional ramp start capabilities.



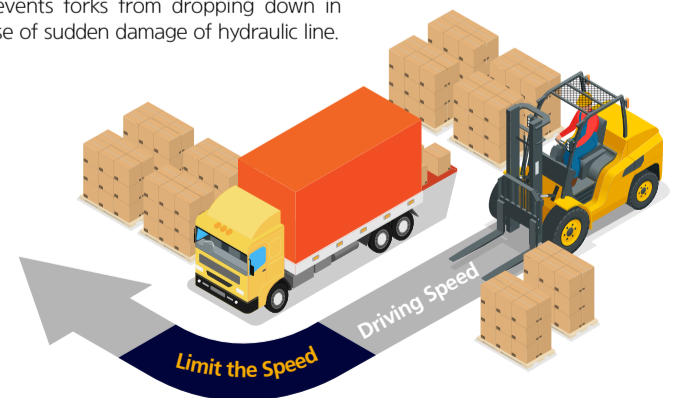
Fork safety features

When the forks are being lowered, a down-control valve maintains the controlled speed. The down-safety valve prevents forks from dropping down in case of sudden damage of hydraulic line.



Operator Presence Sensing System (OPSS)

When operator is not in seat the hydraulic lift and tilt controls and travel are locked out.

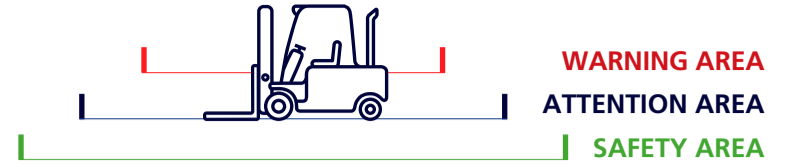


Curve control

Curve Control limits travel speed based on turning radius for a smooth, precise turning operation for the driver.

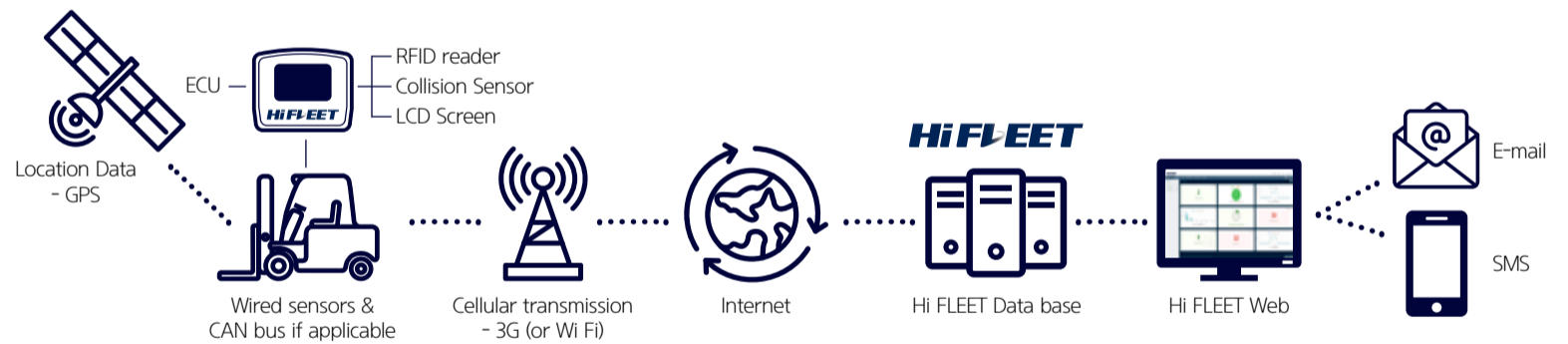
IPAS: Intelligent Proximity Alert System (OPT)

Emits a warning (vibration, warning noise) in each area by measuring the distance between the forklift and a nearby pedestrian in real time with wireless communication.



Fleet Management System(Hi FLEET) (OPT)

Hi FLEET, Hyundai material handling's fleet management system, is the optimal operation solution for a fleet of forklifts. It connects driver and vehicle in real time.



DRIVER MANAGEMENT

It is possible to certify drivers and manage their work through RFID, PIN password.



VEHICLE MANAGEMENT

You can check the operating time, battery status, and location information in real time.



SAFETY MANAGEMENT

You can check the driver's conditions and vehicle status before starting work and manage the speed and collision.



MAINTENANCE

You can keep your vehicles in optimal condition by notifying the vehicle's maintenance interval and fault codes.

Hi FLEET System



Certification

- RFID
- PIN

Key-On

- Pre-check
- Location Information

Work Management

- Work Instructions

Operation

- Driver Management
- Alarm / Push
- Speeding / Collision

Key-Off

- Location Information

Operation Information

- Work Efficiency
- Maintenance
- Remaining Fuel



New 9 Series Mast Specification

15/18/20BT-9U

15BT-9U



| Mast Type | Maximum Fork Height | | Overall Height (Lowered) | | Free lift height | | | | | | Tilt Angle | | Load capacity w/o side shift | | Load capacity w/side shift | | Truck Weight (Unloaded) | | |
|---------------------------|---------------------|-------|--------------------------|-------|--------------------|------|-----------------------|------|-----------------------------------|------|------------|-----|------------------------------|-----------|----------------------------|-----------|-------------------------|------|------|
| | | | | | With Load Backrest | | Without Load Backrest | | Without Load Backrest (3/4-SPOOL) | | Fwd | Bwd | 24 in LC | 500 mm LC | 24 in LC | 500 mm LC | | | |
| | in | mm | in | mm | in | mm | in | mm | in | mm | deg | deg | lb | kg | lb | kg | lb | kg | |
| 2-STAGE LIMITED FREE LIFT | V270 | 107.5 | 2730 | 71.7 | 1822 | 1.4 | 35 | 1.4 | 35 | 1.4 | 35 | 5 | 7 | 3000 | 1500 | 2930 | 1440 | 6841 | 3103 |
| | V300 | 119.3 | 3030 | 77.6 | 1972 | | | | | | | 5 | 7 | 3000 | 1500 | 2930 | 1440 | 6885 | 3123 |
| | *V330 | 131.1 | 3330 | 83.5 | 2122 | | | | | | | 5 | 7 | 3000 | 1500 | 2930 | 1440 | 6929 | 3143 |
| | V350 | 139.0 | 3530 | 87.5 | 2222 | | | | | | | 5 | 7 | 3000 | 1500 | 2930 | 1440 | 6958 | 3156 |
| | V370 | 146.9 | 3730 | 91.4 | 2322 | | | | | | | 5 | 7 | 3000 | 1500 | 2930 | 1440 | 6986 | 3169 |
| | V400 | 158.7 | 4030 | 97.3 | 2472 | | | | | | | 5 | 7 | 2950 | 1450 | 2840 | 1400 | 7039 | 3193 |
| | V450 | 178.3 | 4530 | 111.1 | 2822 | | | | | | | 5 | 5 | 2840 | 1400 | 2730 | 1340 | 7189 | 3261 |
| | V500 | 198.0 | 5030 | 120.9 | 3072 | | | | | | | 5 | 5 | 2750 | 1350 | 2640 | 1300 | 7262 | 3294 |
| 2-STAGE FULL FREE LIFT | VS300 | 119.3 | 3030 | 77.6 | 1972 | 38.3 | 972 | 59.3 | 1507 | 51.6 | 1312 | 5 | 5 | 3000 | 1500 | 2930 | 1440 | 6969 | 3161 |
| | VS330 | 131.1 | 3330 | 83.5 | 2122 | 44.2 | 1122 | 59.3 | 1507 | 51.6 | 1312 | 5 | 5 | 3000 | 1500 | 2930 | 1440 | 7017 | 3183 |
| 3-STAGE FULL FREE LIFT | TF370 | 147.2 | 3740 | 69.8 | 1772 | 30.4 | 772 | 47.0 | 1205 | 42.0 | 1065 | 5 | 5 | 3000 | 1475 | 2860 | 1420 | 7138 | 3238 |
| | TF400 | 159.1 | 4040 | 73.7 | 1872 | 34.3 | 872 | 51.3 | 1305 | 45.8 | 1165 | 5 | 5 | 2930 | 1450 | 2820 | 1390 | 7183 | 3258 |
| | TF430 | 170.9 | 4340 | 77.6 | 1972 | 38.3 | 972 | 55.3 | 1405 | 49.8 | 1265 | 5 | 5 | 2840 | 1400 | 2730 | 1340 | 7227 | 3278 |
| | TF450 | 178.7 | 4540 | 81.6 | 2072 | 42.2 | 1072 | 61.2 | 1555 | 55.7 | 1415 | 5 | 5 | 2800 | 1375 | 2680 | 1320 | 7269 | 3297 |
| | TF470 | 186.6 | 4740 | 83.5 | 2122 | 44.2 | 1122 | 61.2 | 1555 | 55.7 | 1415 | 5 | 5 | 2750 | 1350 | 2640 | 1300 | 7293 | 3308 |
| | TF500 | 198.4 | 5040 | 87.5 | 2222 | 48.1 | 1222 | 59.6 | 1515 | 59.6 | 1515 | 5 | 5 | 2640 | 1300 | 2550 | 1250 | 7337 | 3328 |
| | TF550 | 218.1 | 5540 | 95.4 | 2422 | 56.0 | 1422 | 75.0 | 1905 | 69.5 | 1765 | 5 | 5 | 2550 | 1250 | 2460 | 1200 | 7423 | 3367 |
| | TF600 | 237.8 | 6040 | 103.2 | 2622 | 63.9 | 1622 | 82.8 | 2105 | 77.3 | 1965 | 5 | 5 | 2420 | 1175 | 2310 | 1130 | 7564 | 3431 |
| | TF650 | 257.5 | 6540 | 111.1 | 2822 | 71.7 | 1822 | 89.9 | 2285 | 84.5 | 2145 | 3 | 3 | 1850 | 900 | 1760 | 850 | 7663 | 3476 |
| | TF700 | 277.2 | 7040 | 119.0 | 3022 | 79.6 | 2022 | 97.0 | 2465 | 91.5 | 2325 | 3 | 3 | 1340 | 650 | 1270 | 610 | 7747 | 3514 |
| | TS430 | 170.9 | 4340 | 77.6 | 1972 | 38.3 | 972 | 51.4 | 1307 | 44.8 | 1137 | 5 | 5 | 2840 | 1400 | 2730 | 1340 | 7227 | 3278 |
| | TS450 | 178.7 | 4540 | 81.6 | 2072 | 42.2 | 1072 | 57.3 | 1457 | 50.6 | 1287 | 5 | 5 | 2800 | 1375 | 2680 | 1320 | 7269 | 3297 |
| | TS470 | 186.6 | 4740 | 83.5 | 2122 | 44.2 | 1122 | 57.3 | 1457 | 50.6 | 1287 | 5 | 5 | 2750 | 1350 | 2640 | 1300 | 7293 | 3308 |
| | TS500 | 198.4 | 5040 | 87.5 | 2222 | 48.1 | 1222 | 61.3 | 1557 | 54.6 | 1387 | 5 | 5 | 2640 | 1300 | 2550 | 1250 | 7337 | 3328 |
| | TS550 | 218.1 | 5540 | 95.4 | 2422 | 56.0 | 1422 | 71.1 | 1807 | 64.5 | 1637 | 5 | 5 | 2550 | 1250 | 2460 | 1200 | 7423 | 3367 |
| | TS600 | 237.8 | 6040 | 103.2 | 2622 | 63.9 | 1622 | 79.0 | 2007 | 72.3 | 1837 | 5 | 5 | 2420 | 1175 | 2310 | 1130 | 7564 | 3431 |
| TS650 | 257.5 | 6540 | 111.1 | 2822 | 71.7 | 1822 | 86.0 | 2187 | 79.4 | 2017 | 3 | 3 | 1850 | 900 | 1760 | 850 | 7663 | 3476 | |
| TS700 | 277.2 | 7040 | 119.0 | 3022 | 79.6 | 2022 | 93.0 | 2367 | 86.5 | 2197 | 3 | 3 | 1340 | 650 | 1270 | 610 | 7747 | 3514 | |

※ TS-Mast : Wide Visible 3-Stage Full Free Lift Mast with 2 Free Lift Cylinders.

※ : Standard

18BT-9U



| Mast Type | Maximum Fork Height | | Overall Height (Lowered) | | Free lift height | | | | | | Tilt Angle | | Load capacity w/o side shift | | Load capacity w/side shift | | Truck Weight (Unloaded) | | |
|---------------------------|---------------------|-------|--------------------------|-------|--------------------|------|-----------------------|------|-----------------------------------|------|------------|-----|------------------------------|-----------|----------------------------|-----------|-------------------------|------|------|
| | | | | | With Load Backrest | | Without Load Backrest | | Without Load Backrest (3/4-SPOOL) | | Fwd | Bwd | 24 in LC | 500 mm LC | 24 in LC | 500 mm LC | | | |
| | in | mm | in | mm | in | mm | in | mm | in | mm | deg | deg | lb | kg | lb | kg | lb | kg | |
| 2-STAGE LIMITED FREE LIFT | V270 | 107.5 | 2730 | 71.8 | 1824 | 1.4 | 35 | 1.4 | 35 | 1.4 | 35 | 5 | 7 | 3500 | 1800 | 3500 | 1730 | 7467 | 3387 |
| | V300 | 119.3 | 3030 | 77.7 | 1974 | | | | | | | 5 | 7 | 3500 | 1800 | 3500 | 1730 | 7509 | 3406 |
| | *V330 | 131.1 | 3330 | 83.6 | 2124 | | | | | | | 5 | 7 | 3500 | 1800 | 3500 | 1730 | 7555 | 3427 |
| | V350 | 139.0 | 3530 | 87.6 | 2224 | | | | | | | 5 | 7 | 3500 | 1800 | 3500 | 1730 | 7584 | 3440 |
| | V370 | 146.9 | 3730 | 91.5 | 2324 | | | | | | | 5 | 7 | 3500 | 1800 | 3500 | 1730 | 7610 | 3452 |
| | V400 | 158.7 | 4030 | 97.4 | 2474 | | | | | | | 5 | 7 | 3500 | 1750 | 3410 | 1680 | 7665 | 3477 |
| | V450 | 178.3 | 4530 | 111.2 | 2824 | | | | | | | 5 | 5 | 3460 | 1700 | 3350 | 1640 | 7813 | 3544 |
| | V500 | 198.0 | 5030 | 121.0 | 3074 | | | | | | | 5 | 5 | 3280 | 1600 | 3150 | 1540 | 7888 | 3578 |
| 2-STAGE FULL FREE LIFT | VS300 | 119.3 | 3030 | 77.7 | 1974 | 38.6 | 981 | 58.2 | 1479 | 52.7 | 1339 | 5 | 5 | 3500 | 1800 | 3500 | 1730 | 7595 | 3445 |
| | VS330 | 131.1 | 3330 | 83.6 | 2124 | 44.5 | 1131 | 58.2 | 1479 | 58.6 | 1489 | 5 | 5 | 3500 | 1800 | 3500 | 1730 | 7641 | 3466 |
| 3-STAGE FULL FREE LIFT | TF370 | 147.2 | 3740 | 69.8 | 1774 | 30.7 | 781 | 47.4 | 1205 | 41.9 | 1065 | 5 | 5 | 3500 | 1750 | 3410 | 1680 | 7765 | 3522 |
| | TF400 | 159.1 | 4040 | 73.8 | 1874 | 34.7 | 881 | 47.4 | 1205 | 45.9 | 1165 | 5 | 5 | 3460 | 1700 | 3320 | 1630 | 7809 | 3542 |
| | TF430 | 170.9 | 4340 | 77.7 | 1974 | 38.6 | 981 | 47.4 | 1205 | 49.8 | 1265 | 5 | 5 | 3370 | 1650 | 3260 | 1590 | 7853 | 3562 |
| | TF450 | 178.7 | 4540 | 81.7 | 2074 | 42.6 | 1081 | 61.2 | 1555 | 55.7 | 1415 | 5 | 5 | 3320 | 1625 | 3190 | 1560 | 7895 | 3581 |
| | TF470 | 186.6 | 4740 | 83.6 | 2124 | 44.5 | 1131 | 61.2 | 1555 | 55.7 | 1415 | 5 | 5 | 3260 | 1600 | 3130 | 1530 | 7919 | 3592 |
| | TF500 | 198.4 | 5040 | 87.6 | 2224 | 48.5 | 1231 | 65.2 | 1655 | 59.6 | 1515 | 5 | 5 | 3170 | 1550 | 3060 | 1490 | 7963 | 3612 |
| | TF550 | 218.1 | 5540 | 95.4 | 2424 | 56.3 | 1431 | 75.0 | 1905 | 69.5 | 1765 | 5 | 5 | 2970 | 1450 | 2860 | 1390 | 8049 | 3651 |
| | TF600 | 237.8 | 6040 | 103.3 | 2624 | 64.2 | 1631 | 82.9 | 2105 | 77.4 | 1965 | 5 | 5 | 2420 | 1175 | 2310 | 1130 | 8190 | 3715 |
| | TF650 | 257.5 | 6540 | 111.2 | 2824 | 72.1 | 1831 | 90.0 | 2285 | 84.4 | 2145 | 3 | 3 | 2180 | 1050 | 2090 | 1010 | 8287 | 3759 |
| | TF700 | 277.2 | 7040 | 119.1 | 3024 | 80.0 | 2031 | 98.4 | 2499 | 92.9 | 2359 | 3 | 3 | 1670 | 800 | 1580 | 760 | 8373 | 3798 |
| | TS430 | 170.9 | 4340 | 77.7 | 1974 | 38.6 | 981 | 51.5 | 1307 | 44.8 | 1137 | 5 | 5 | 3370 | 1650 | 3260 | 1590 | 7853 | 3562 |
| | TS450 | 178.7 | 4540 | 81.7 | 2074 | 42.6 | 1081 | 57.4 | 1457 | 50.7 | 1287 | 5 | 5 | 3320 | 1625 | 3190 | 1560 | 7895 | 3581 |
| | TS470 | 186.6 | 4740 | 83.6 | 2124 | 44.5 | 1131 | 57.4 | 1457 | 50.7 | 1287 | 5 | 5 | 3260 | 1600 | 3130 | 1530 | 7919 | 3592 |
| | TS500 | 198.4 | 5040 | 87.6 | 2224 | 48.5 | 1231 | 61.3 | 1557 | 54.6 | 1387 | 5 | 5 | 3170 | 1550 | 3060 | 1490 | 7963 | 3612 |
| | TS550 | 218.1 | 5540 | 95.4 | 2424 | 56.3 | 1431 | 71.1 | 1807 | 64.4 | 1637 | 5 | 5 | 2970 | 1450 | 2860 | 1390 | 8049 | 3651 |
| | TS600 | 237.8 | 6040 | 103.3 | 2624 | 64.2 | 1631 | 79.0 | 2007 | 72.3 | 1837 | 5 | 5 | 2420 | 1175 | 2310 | 1130 | 8190 | 3715 |
| TS650 | 257.5 | 6540 | 111.2 | 2824 | 72.1 | 1831 | 86.1 | 2187 | 79.4 | 2017 | 3 | 3 | 2180 | 1050 | 2090 | 1010 | 8287 | 3759 | |
| TS700 | 277.2 | 7040 | 119.1 | 3024 | 80.0 | 2031 | 93.2 | 2367 | 86.5 | 2197 | 3 | 3 | 1670 | 800 | 1580 | 760 | 8373 | 3798 | |

※ TS-Mast : Wide Visible 3-Stage Full Free Lift Mast with 2 Free Lift Cylinders.

※ : Standard

New 9 Series

20BT-9U

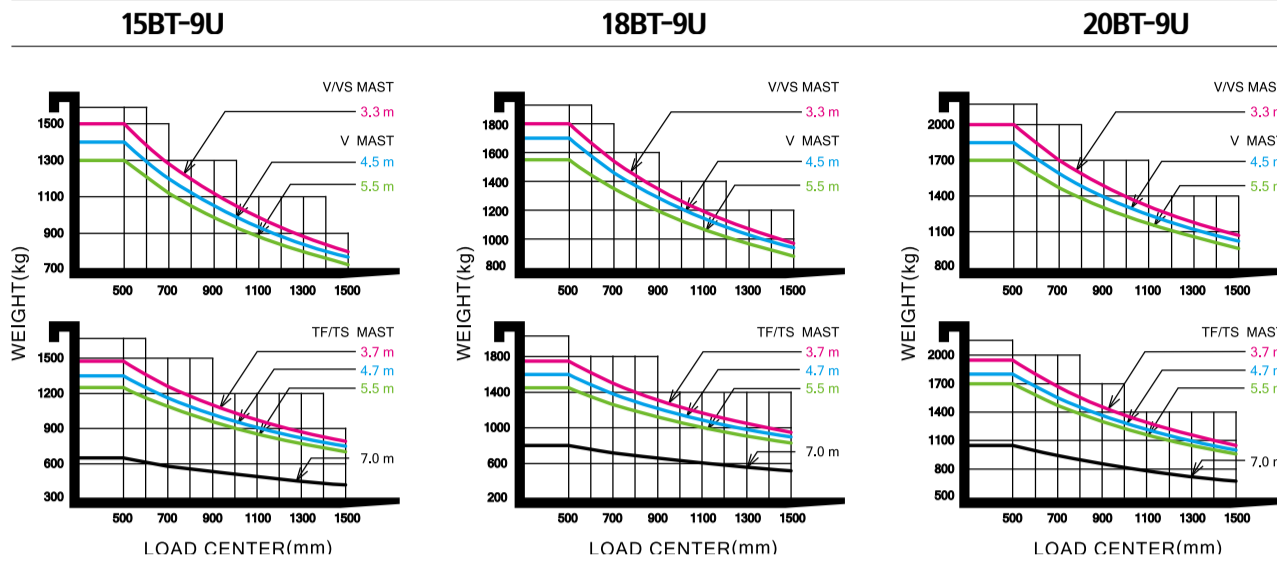


| Mast Type | Maximum Fork Height | | Overall Height (Lowered) | | Free lift height | | | | | | Tilt Angle | | Load capacity w/o side shift | | Load capacity w/side shift | | Truck Weight (Unloaded) | | |
|---------------------------|---------------------|-------|--------------------------|-------|--------------------|------|-----------------------|------|-----------------------------------|------|------------|-----|------------------------------|-----------|----------------------------|-----------|-------------------------|------|------|
| | | | | | With Load Backrest | | Without Load Backrest | | Without Load Backrest (3/4-SPOOL) | | Fwd | Bwd | 24 in LC | 500 mm LC | 24 in LC | 500 mm LC | | | |
| | in | mm | in | mm | in | mm | in | mm | in | mm | deg | deg | lb | kg | lb | kg | lb | kg | |
| 2-STAGE LIMITED FREE LIFT | V270 | 107.5 | 2730 | 71.8 | 1824 | 1.6 | 40 | 1.6 | 40 | 1.6 | 40 | 5 | 7 | 4000 | 2000 | 3900 | 1920 | 7762 | 3521 |
| | V300 | 119.3 | 3030 | 77.7 | 1974 | | | | | | | 5 | 7 | 4000 | 2000 | 3900 | 1920 | 7804 | 3540 |
| | *V330 | 131.1 | 3330 | 83.6 | 2124 | | | | | | | 5 | 7 | 4000 | 2000 | 3900 | 1920 | 7851 | 3561 |
| | V350 | 139.0 | 3530 | 87.6 | 2224 | | | | | | | 5 | 7 | 4000 | 2000 | 3900 | 1920 | 7879 | 3574 |
| | V370 | 146.9 | 3730 | 91.5 | 2324 | | | | | | | 5 | 7 | 4000 | 2000 | 3900 | 1920 | 7906 | 3586 |
| | V400 | 158.7 | 4030 | 97.4 | 2474 | | | | | | | 5 | 7 | 3960 | 1950 | 3810 | 1880 | 7961 | 3611 |
| | V450 | 178.3 | 4530 | 111.2 | 2824 | | | | | | | 5 | 5 | 3770 | 1850 | 3630 | 1780 | 8108 | 3678 |
| | V500 | 198.0 | 5030 | 121.0 | 3074 | | | | | | | 5 | 5 | 3660 | 1800 | 3540 | 1730 | 8183 | 3712 |
| 2-STAGE FULL FREE LIFT | VS300 | 119.3 | 3030 | 77.7 | 1974 | 38.8 | 986 | 59.7 | 1516 | 52.9 | 1344 | 5 | 5 | 4000 | 2000 | 3900 | 1920 | 7890 | 3579 |
| | VS330 | 131.1 | 3330 | 83.6 | 2124 | 44.7 | 1136 | 59.7 | 1516 | 58.8 | 1494 | 5 | 5 | 4000 | 2000 | 3900 | 1920 | 7937 | 3600 |
| 3-STAGE FULL FREE LIFT | TF370 | 147.2 | 3740 | | | | | | | | | | | | | | | | |

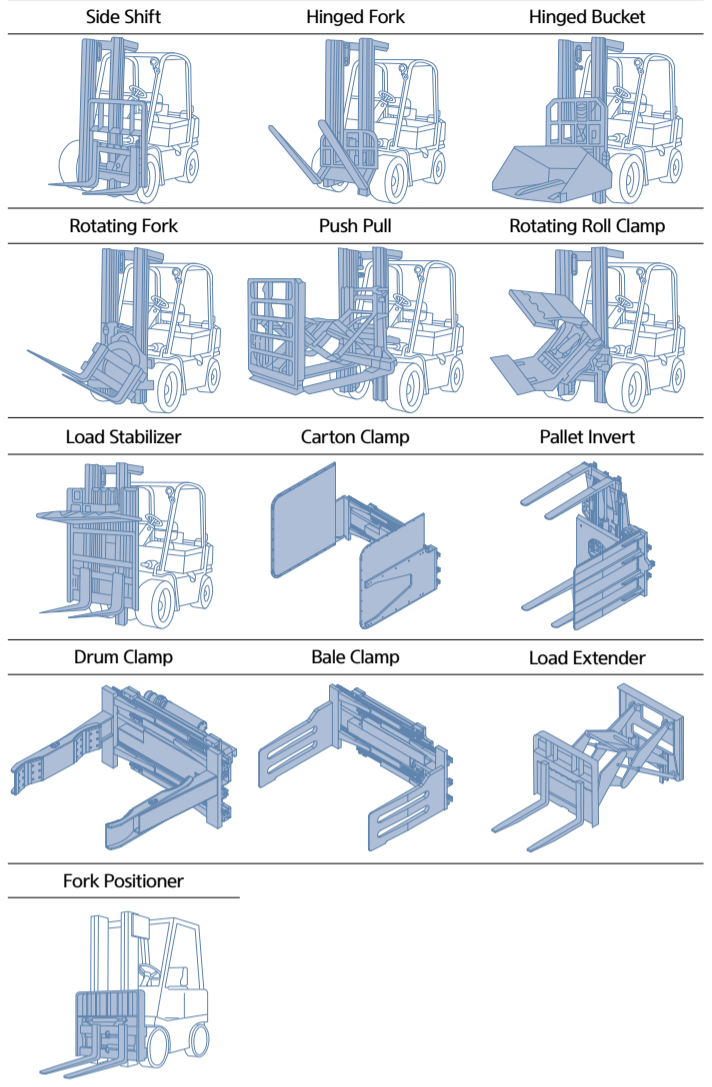
New 9 Series

15/18/20BT-9U

Load Capacity



Various Attachments



Optional Items

- Fork (mm) : 40x100x900(STD), 950, 1000, 1050, 1150, 1200, 1350, 1500, 1600
- Integral Sideshift · Finger Tip Control · Direction Switch on Lever
- Tire : Non-marking / Wide tire [15BT-9U : Front tire (200 / 50-10)] · Cold Storage (for - 30°C cold working environments)
- M.C.V : 2-Spool (STD), 3-Spool, 4-Spool · Auto Fork Leveling · Beacon Lamp · Load Indicator
- Work lamp : LED · OPSS : Mast · UL : ES, EE · Cabin

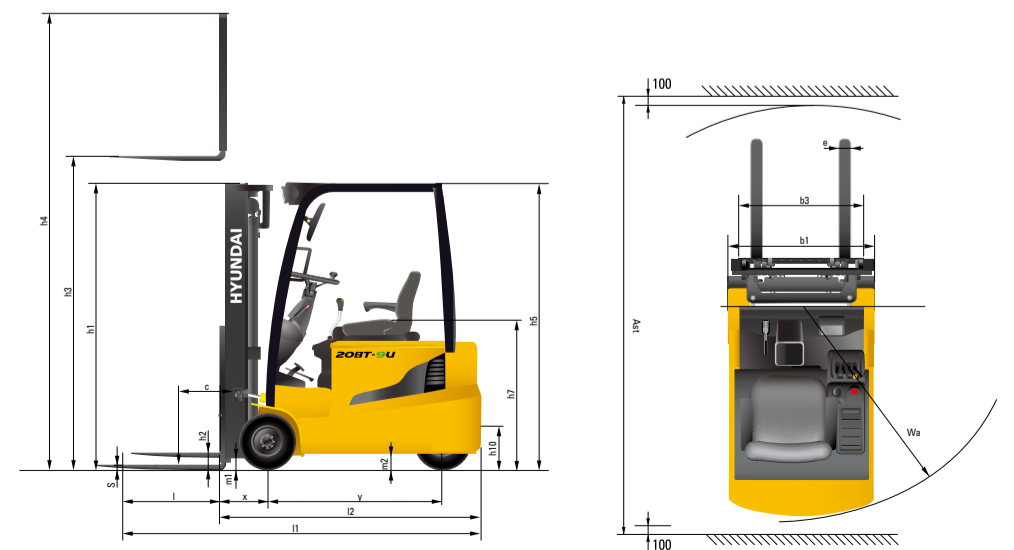
New 9 Series

Specification

| DISTINGUISHING MARK | | | | | |
|---------------------|---|-------------------|-------------------------|-------------------------|-------------------------|
| 1.1 | Manufacturer (Abbreviation) | | Hyundai | | |
| 1.2 | Manufacturer's Type Designation | 15BT-9U | 18BT-9U | 20BT-9U | |
| 1.3 | Drive : Electric (Battery Or Mains), Diesel, Petrol, Fuel Gas | electric | electric | electric | |
| 1.4 | Type Of Operation: Hand, Pedestrian, Standing, Seated, Order-Picker | seated | seated | seated | |
| 1.5 | Load Capacity / Rated Load | Kg (Lb) | 1500 (3000) | 1800 (3500) | 2000 (4000) |
| 1.6 | Load Center Distance | c mm (in) | 500 (24) | 500 (24) | 500 (24) |
| 1.8 | Load Distance, Center Of Drive Axle To Fork | x mm (in) | 380 (14.96) | 380 (14.96) | 380 (14.96) |
| 1.9 | Wheelbase | y mm (in) | 1345 (53.0) | 1430 (56.30) | 1430 (56.30) |
| WEIGHT | | | | | |
| 2.1 | Service Weight | kg (lb) | 3118 (6874) | 3407 (7511) | 3542 (7809) |
| 2.2 | Axle Loading, Loaded Front / Rear | kg (lb) | 4129/489 (8842/1032) | 4642/565 (9748/1263) | 4956/586 (10572/1237) |
| 2.3 | Axle Loading, Unloaded Front / Rear | kg (lb) | 1654/1464 (3646/3228) | 1741/1666 (3838/3673) | 1725/1817 (3804/4005) |
| TIRES, CHASSIS | | | | | |
| 3.1 | Tires : Solid Rubber, Superelastic, Pneumatic, Polyurethane | | SE | SE | SE |
| 3.2 | Tire Size, Front | | 18x7-8 | 200/50-10 | 200/50-10 |
| 3.3 | Tire Size, Rear | | 15x4.5-8 | 15x4.5-8 | 15x4.5-8 |
| 3.5 | Wheels, Number Front / Rear (X = Driven Wheels) | | 2x/2 | 2x/2 | 2x/2 |
| 3.6 | Tread, Front | mm (in) | 895 (35.2) | 905 (35.6) | 905 (35.6) |
| 3.7 | Tread, Rear | mm (in) | 184 (7.24) | 184 (7.24) | 184 (7.24) |
| DIMENSIONS | | | | | |
| 4.1 | Tilt Of Mast/Fork Carriage Forward/Backward | degree | 5/7 | 5/7 | 5/7 |
| 4.2 | Height, Mast Lowered | h1 mm (in) | 2120 (83.5) | 2120 (83.5) | 2120 (83.5) |
| 4.3 | Free Lift | h2 mm (in) | 40 (1.5) | 40 (1.5) | 40 (1.5) |
| 4.4 | Lift Height | h3 mm (in) | 3330 (131.10) | 3330 (131.10) | 3330 (131.10) |
| 4.5 | Height, Mast Extended | h4 mm (in) | 4320 (170.07) | 4320 (170.07) | 4320 (170.07) |
| 4.7 | Height Of Overhead Guard (Cabin) | h5 mm (in) | 2065 (81.29) | 2065 (81.29) | 2065 (81.29) |
| 4.8 | Seat Height / Stand Height Rel. To Sip | h7 mm (in) | 1090 (42.91) | 1090 (42.91) | 1090 (42.91) |
| 4.12 | Coupling Height | h10 mm (in) | 520 (20.5) | 520 (20.5) | 520 (20.5) |
| 4.19 | Overall Length | l1 mm (in) | 2800 (110.24) | 2890 (113.8) | 2925 (114.56) |
| 4.20 | Length To Face Of Forks | l2 mm (in) | 1900 (78.35) | 1990 (78.3) | 2025 (79.72) |
| 4.21 | Overall Width | b1 mm (in) | 1074 (42.28) | 1105 (43.50) | 1105 (43.50) |
| 4.22 | Fork Dimensions | s x e x l mm (in) | 40x100x900 (1.6x4x35.4) | 40x100x900 (1.6x4x35.4) | 40x100x900 (1.6x4x35.4) |
| 4.23 | Fork Carriage Iso 2328, Class / Type A, B | | 2A | 2A | 2A |
| 4.24 | Fork-Carriage Width | b3 mm (in) | 1006 (39.60) | 1006 (39.60) | 1006 (39.60) |
| 4.31 | Ground Clearance, Below Mast, Loaded | m1 mm (in) | 89 (3.50) | 89 (3.50) | 89 (3.50) |
| 4.32 | Ground Clearance, Center Of Wheelbase | m2 mm (in) | 95 (3.74) | 95 (3.74) | 95 (3.74) |
| 4.33 | Aisle Width For Pallets 1000 X 1200 Crossways (L X W) | Ast mm (in) | 3226 (127.00) | 3316 (130.55) | 3351 (131.92) |
| 4.34 | Aisle Width Of Pallets 800 X 1200 Crossways (W X L) | Ast mm (in) | 3350 (131.88) | 3440 (135.43) | 3475 (136.81) |
| 4.35 | Turning Radius | Wa mm (in) | 1540 (60.62) | 1630 (64.17) | 1660 (65.35) |

| PERFORMANCE DATA | | | | | |
|------------------|--|---------------|------------------------------|------------------------------|------------------------------|
| 5.1 | Travel Speed, Loaded / Unloaded | km/h (mph) | 16/16 (9.9/9.9) | 16/16 (9.9/9.9) | 16/16 (9.9/9.9) |
| 5.2 | Lift Speed, Loaded / Unloaded | mm/s (ft/min) | 400/550 (78.7/108.3) | 400/550 (78.7/108.3) | 400/550 (78.7/108.3) |
| 5.3 | Lowering Speed, Loaded / Unloaded | mm/s (ft/min) | 550/450 (108.3/88.6) | 550/450 (108.3/88.6) | 550/450 (108.3/88.6) |
| 5.6 | Max. Drawbar Pull, Loaded / Unloaded | N (lb) | 15102/14759 (3395/3318) | 15190/14710 (3415/3306) | 14367/14043 (3229/7/3156) |
| 5.8 | Max. Gradeability, Loaded / Unloaded | % | 29.5/- | 27.5/- | 24.5/- |
| 5.10 | Service Brake | | hydr. | hydr. | hydr. |
| ELECTRIC-MOTOR | | | | | |
| 6.1 | Drive Motor Rating S2 60 Min | kW (hp) | 5.4x2 (7.3x2) | 5.4x2 (7.3x2) | 5.4x2 (7.3x2) |
| 6.2 | Lift Motor Rating At S3 15% | kW (hp) | 14.9 (20.3) | 14.9 (20.3) | 14.9 (20.3) |
| 6.4 | Battery Voltage, Nominal Capacity K5 | V/Ah | 48/440 | 48/510 | 48/510 |
| 6.5 | Battery Weight (Min.) | Kg (lb) | 780 (1742) | 950 (2094) | 950 (2094) |
| 6.7 | Battery Compartment Dimensions L/W/H | mm (in) | 983/553/650 (38.7/21.8/25.6) | 983/638/650 (38.7/25.1/27.6) | 983/638/650 (38.7/25.1/27.6) |
| ADDITION DATA | | | | | |
| 8.1 | Type Of Drive Control | | AC | AC | AC |
| 8.2 | Operating Pressure, System / Attachments | bar (psi) | 190/130 (2755/1885) | 190/130 (2755/1885) | 190/130 (2755/1885) |
| 8.3 | Oil Volume For Attachments | LPM | 20 | 20 | 20 |

Dimension



* All specifications in this catalog are subject to change according to the optional items.